

BALDOR® • RELIANCE 

Product Information Packet

PSC3416A

.33HP, 1625RPM, 1PH, 60HZ, 48Z, 3414C, TEAO, F1

Part Detail							
Revision:	N	Status:	PRD/A	Change #:		Proprietary:	No
Type:	AC	Elec. Spec:	34WGW426	CD Diagram:	CD0028	Mfg Plant:	
Mech. Spec:	34G144	Layout:	34LYG144	Poles:	04	Created Date:	
Base:	RG	Eff. Date:	11-12-2018	Leads:	7#18		

Specs			
Catalog Number:	PSC3416A	Inverter Code:	Not Inverter
Enclosure:	TEAO	KVA Code:	-
Frame:	48Z	Lifting Lugs:	No Lifting Lugs
Frame Material:	Steel	Locked Bearing Indicator:	No Locked Bearing
Output @ Frequency:	.330 HP @ 60 HZ	Motor Lead Quantity/Wire Size:	7 @ 18 AWG
Synchronous Speed @ Frequency:	1800 RPM @ 60 HZ	Motor Lead Exit:	Terminal Panel Or Lead Hole
Voltage @ Frequency:	115.0 V @ 60 HZ	Motor Lead Termination:	Flying Leads
	230.0 V @ 60 HZ	Motor Type:	3414C
XP Class and Group:	None	Mounting Arrangement:	F1
XP Division:	Not Applicable	Power Factor:	95
Agency Approvals:	UR	Product Family:	General Purpose
	CSA	Pulley End Bearing Type:	Ball
Auxillary Box:	No Auxillary Box	Pulley Face Code:	Standard
Auxillary Box Lead Termination:	None	Pulley Shaft Indicator:	Standard
Base Indicator:	Rigid	Rodent Screen:	None
Bearing Grease Type:	Polyrex EM (-20F +300F)	Shaft Extension Location:	Pulley End
Blower:	None	Shaft Ground Indicator:	No Shaft Grounding
Current @ Voltage:	1.800 A @ 230.0 V	Shaft Rotation:	Reversible

	3.600 A @ 115.0 V	Shaft Slinger Indicator:	No Slinger
Design Code:	N	Speed Code:	Single Speed
Drip Cover:	No Drip Cover	Motor Standards:	NEMA
Duty Rating:	CONT	Starting Method:	Direct on line
Electrically Isolated Bearing:	Not Electrically Isolated	Thermal Device - Bearing:	None
Feedback Device:	NO FEEDBACK	Thermal Device - Winding:	None
Front Face Code:	Terminal Panel	Vibration Sensor Indicator:	No Vibration Sensor
Front Shaft Indicator:	None	Winding Thermal 1:	Automatic Thermal Overload
Heater Indicator:	No Heater	Winding Thermal 1 Location:	SB
Insulation Class:	B	Winding Thermal 2:	None

Nameplate NP1257L	
CAT.NO.	PSC3416A
SPEC.	34G144W426
HP	.33 AIR OVER
VOLTS	115/230
AMP	3.6/1.8
RPM	1625
FRAME	48Z
SER.F.	1.00
NEMA-NOM-EFF	62
RATING	40C AMB-CONT
CC	
DE	6203
ENCL	TEAO
CODE	-
PF	95
ODE	6203
DES	N
CL	B
HZ	60
PH	1
	USABLE AT 208V
SN	

Parts List		
Part Number	Description	Quantity
SA006247	SA 34G144W426	1.000 EA
RA002993	RA 34G144W426	1.000 EA
RM1001A01	GROMMET "MIDSTATES"	1.000 EA
WD4100A01	DP-875 HEYCO PLUG OR 62MP0875 MICRO PLAS	1.000 EA
11XW0832G06	#8-32 X 3/8, TAPTITE II, HEX WSHR SLTD	1.000 EA
34EP3204A01SP	FR ENDPLATE, MACH	1.000 EA
SP1000A09	TERM BOARD, MODEL 34 SW, (RPL SP1000A01)	1.000 EA
51XB1016A05	10-16X5/16HX WA SL SR TYB (F/S)	2.000 EA
HW5100A03	WAVY WASHER (W1543-017)	1.000 EA
34EP3102A02SP	FR/PU ENDPLATE, MACH	1.000 EA
XY1032A02	10-32 HEX NUT DIRECTIONAL SERRATION	4.000 EA
34CB4501SP	TERMINAL BOX LID, STAMPED X (PLATED)	1.000 EA
34GS1005	GASKET, TERM PLATE LID	1.000 EA
51XW0832A07	8-32 X .44, TAPTITE II, HEX WSHR SLTD SE	2.000 EA
51XW0832A07	8-32 X .44, TAPTITE II, HEX WSHR SLTD SE	2.000 EA
MG1000G27	MED CHARCOAL METALLIC GREY 400-0096	0.014 GA
85XU0407S04	4X1/4 U DRIVE PIN STAINLESS	2.000 EA
OC3020F12SP	CAPACITORS 20 MFD 370 VAC	1.000 EA
33CB4800A01	CAPACITOR COVER, STAMPED	1.000 EA
35GS3001A01	GASKET, CAPACITOR COVER	1.000 EA
HA3100A17	THRUBOLT 10-32 X 9.000	4.000 EA
MN416A01	TAG-INSTAL-MAINT no wire (1200/bx) 3/19	1.000 EA
LB1118	LABEL,WARNING (ROLL LABEL)	1.000 EA
LC0008	CONNECTION LABEL	1.000 EA

Parts List (continued)		
Part Number	Description	Quantity
NP1257L	ALUM UL CSA CC THERMAL REV MTG	1.000 EA
34PA1002	PKG GRP, PRINT PK1001A01	1.000 EA

AC Induction Motor Performance Data
Record # 6977 - Typical performance - not guaranteed values

Winding: 34WGW426-R001	Type: 3414C	Enclosure: TEAO
-------------------------------	--------------------	------------------------

Nameplate Data				230 V, 60 Hz: High Voltage Connection	
Rated Output (HP)	.33 AIR OVER			Full Load Torque	1 LB-FT
Volts	115/230			Start Configuration	direct on line
Full Load Amps	3.6/1.8			Breakdown Torque	2 LB-FT
R.P.M.	1625			Pull-up Torque	0.7 LB-FT
Hz	60	Phase	1	Locked-rotor Torque	0.7 LB-FT
NEMA Design Code	N	KVA Code	-	Starting Current	5.5 A
Service Factor (S.F.)	1			No-load Current	0.9 A
NEMA Nom. Eff.	62	Power Factor	95	Line-line Res. @ 25°C	10.7 Ω A Ph 10.7 Ω B Ph
Rating - Duty	40C AMB-CONT			Temp. Rise @ Rated Load	

Load Characteristics 230 V, 60 Hz, 0.33 HP

% of Rated Load	25	50	75	100	125	150
Power Factor	94	97	99	99	99	99
Efficiency	25.8	42.5	53.6	60.7	64.7	65.6
Speed	1759	1734	1705	1671	1628	1570
Line amperes	1.1	1.3	1.5	1.75	2.05	2.45

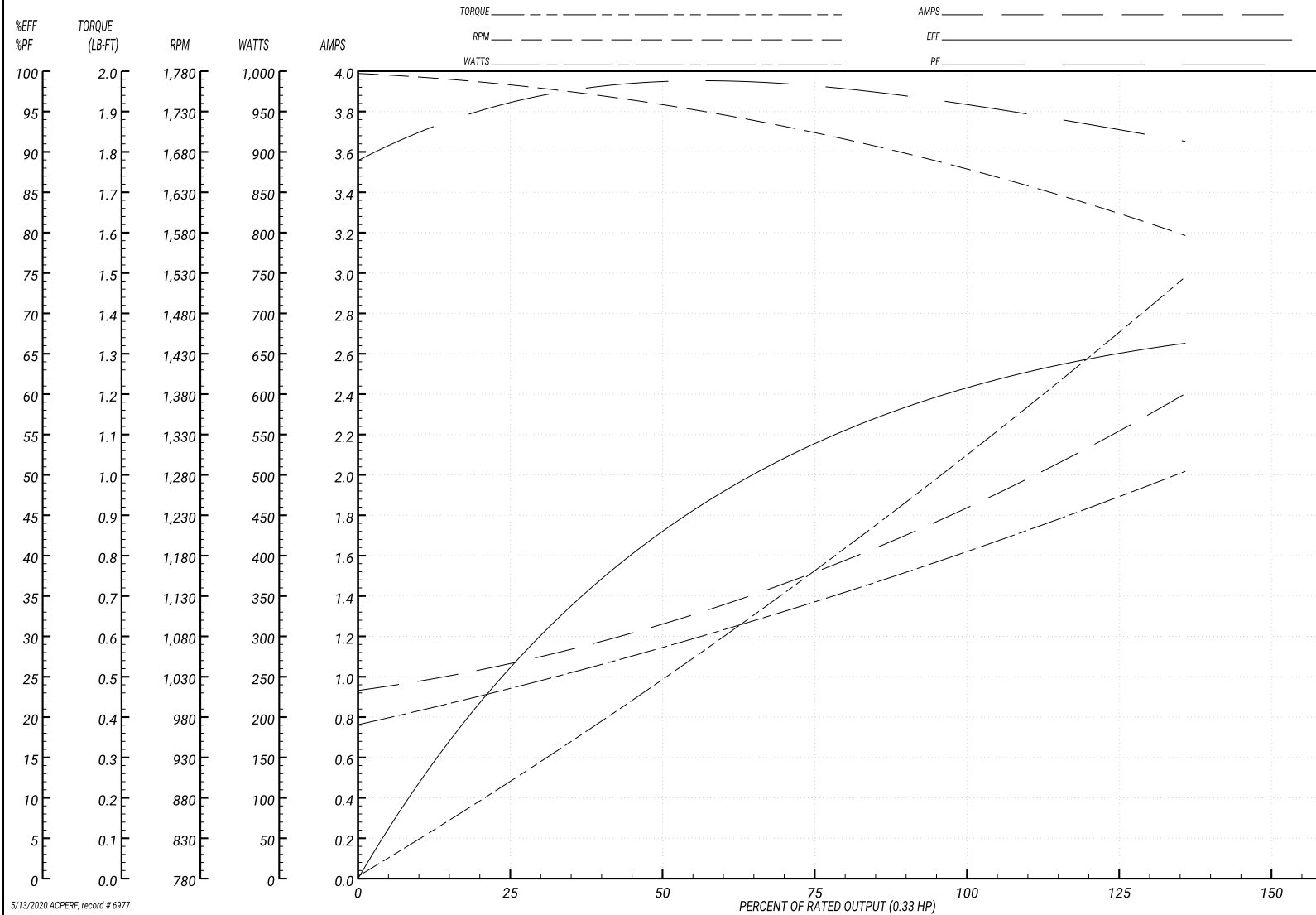
Performance Graph at 230V, 60Hz, 0.33HP Typical performance - Not guaranteed values

ABB Motors and Mechanical Inc.

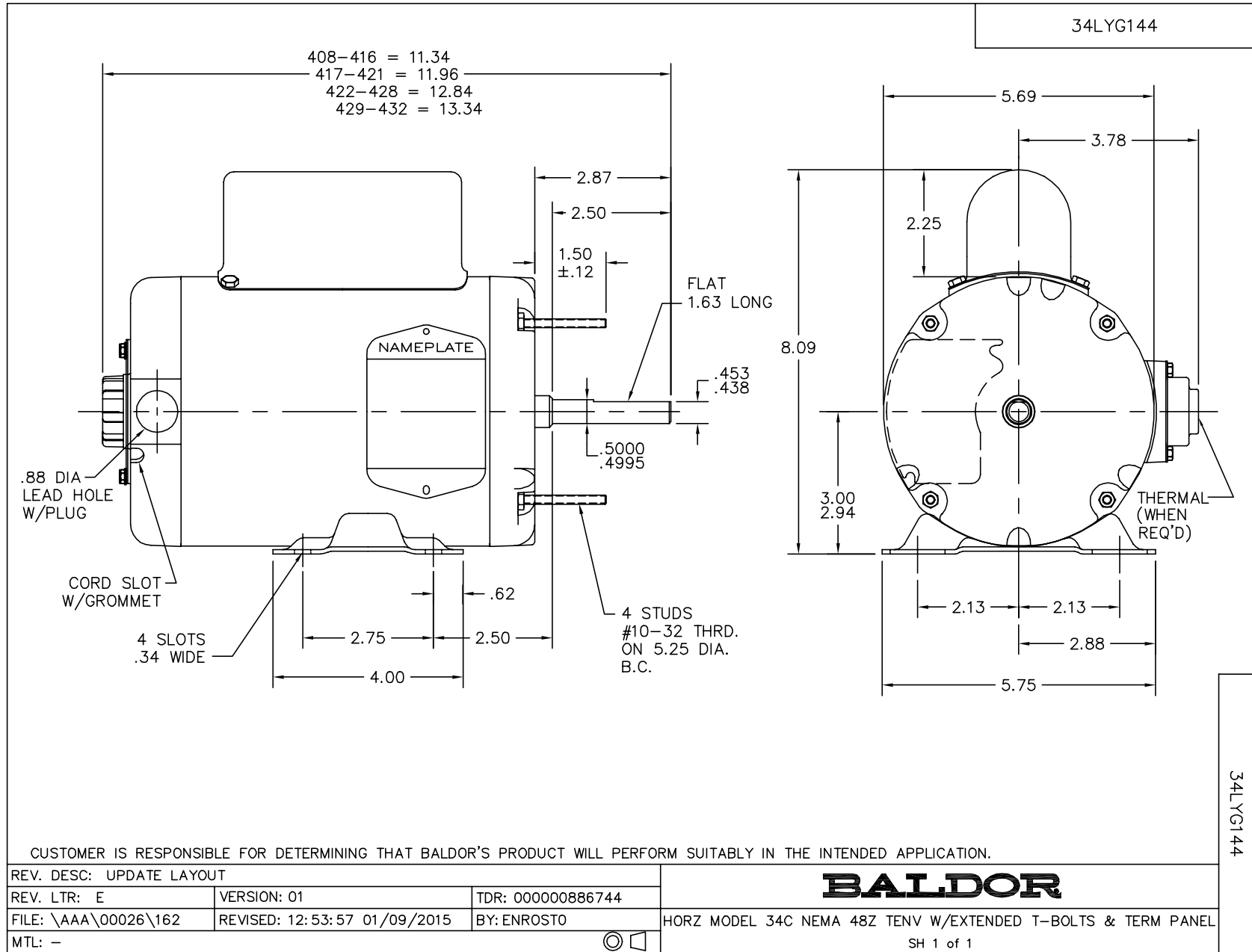
WINDING # 34WG426

Typical performance - not guaranteed values.

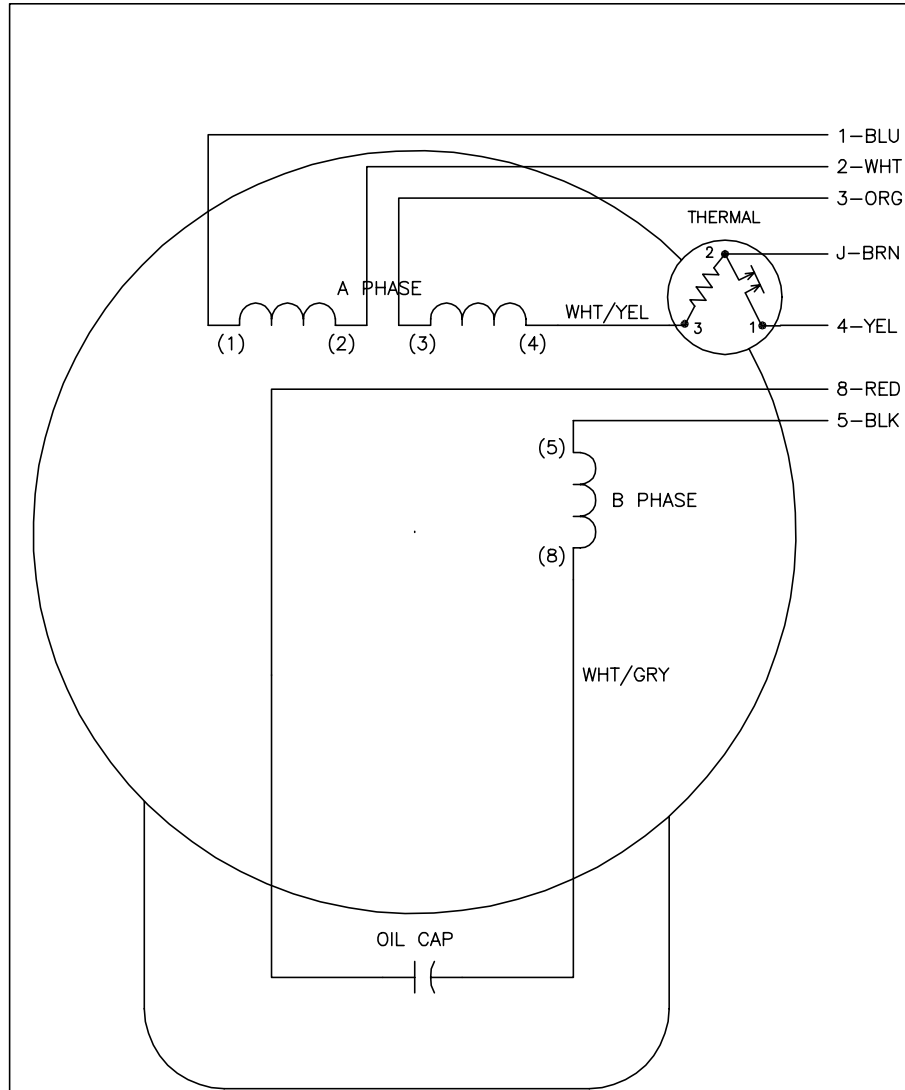
0.33 HP 1 PH 60 HZ 1625 RPM 230 V 3414C
 TORQUES(LB-FT): PO=2 PU=0.7 LR=0.7 LRA=5.5



5/13/2020 ACPERF, record # 6977



CD0028



	LINE A	LINE B	JOIN	JOIN
HIGH STD	1	4	2,3,8	J,5
HIGH OPP	1	4	2,3,5	J,8
LOW STD	1,3,8	4	-	2,J,5
LOW OPP	1,3,5	4	-	2,J,8

NOTES:

1. STANDARD ROTATION IS CCW FACING END OPPOSITE SHAFT EXTENSION.
2. MULTIPLE CAPACITORS ARE CONNECTED IN PARALLEL UNLESS OTHERWISE SPECIFIED.
3. LEAD COLORS ARE OPTIONAL. LEADS MUST ALWAYS BE NUMBERED AS SHOWN.

REV. DESC: REMOVE OPTIONAL THERMAL CONNECTION		
REV. LTR: E	VERSION: 01	TDR: 000000373051
8Z0028	FILE: \AAA\00007\413	REVISED: 15:17:57 09/07/2005
	MTL: -	BY: ENJOEPO

BALDOR ELECTRIC Co.

TYPE C, DV, REV, THERMAL, 7 LEADS

CD0028